

ORIGINAL PRUSA MEDICAL ONE

COMPLEX 3D PRINTING SOLUTION FOR DENTISTRY

EASY TO USE

- ➔ ONE-CLICK PRINTING
- ➔ ONE-TIME CALIBRATION
- ➔ INTUITIVE OPERATION
- ➔ AUTOMATED PROCESSES
- ➔ HIGHLY OPTIMIZED WORKFLOW



MAXIMUM RELIABILITY AND PERFORMANCE

THE FASTEST SLA 3D PRINTER | EXTREMELY DETAILED PRINTS | PRINT MORE MODELS AT THE SAME TIME
BUILT-IN RESIN LEVEL SENSOR | CARBON FILTER TO MINIMIZE RESIN ODORS
SAFETY FUNCTIONS: LID SENSOR, TEMPERATURE MEASUREMENT, CONTINUOUS STATUS MONITORING

PRUSA
RESEARCH
by JOSEF PRUSA

[PRUSA3D.COM](https://prusa3d.com) | CONTACT US: MEDICAL@PRUSA3D.COM

**SUITABLE
FOR**



DENTAL MODELS



SURGICAL GUIDES



CROWNS AND BRIDGES



TRY-INS

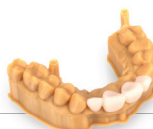
3D PRINTER SPECIFICATIONS

Supported materials	UV-sensitive resin (405 nm), third-party resins supported
Layer exposure time	2 seconds per layer*, independent of layer size
Print area size	127×80×150 mm
LCD parameters	5.96" (15.14 cm), 2560×1620px
Resolution (XY)	0.05 mm
Layer height	from 0.01 mm (ordinarily 0.05 mm)
Connectivity	USB, Wi-Fi, LAN, Touchscreen LCD panel or Web Interface
3D printer dimensions	225×237×400 mm

* depends on the resin

POST-PROCESSING UNIT SPECIFICATIONS

- ➔ All-in-one solution for post-processing of resin-based models
- ➔ Resin preheat function
- ➔ Thorough washing
- ➔ Highly-effective drying
- ➔ 360° UV light curing
- ➔ All necessary accessories included



PRUSA RESEARCH

Prusa Research is a 3D printing developer and manufacturer based in Prague, Czech Republic. The company was established by Josef Prusa in 2012. This small start-up grew quickly and there's over 700 people working for Prusa Research right now. The Prusa i3 design quickly became the no. 1 in the world (according to 3D Hubs) and every month, Prusa Research ships over 10,000 3D printers to over 160 countries worldwide. Our MK3/S 3D printer became the best 3D printer of 2018 and 2019 in the MAKE: Magazine and the best FFF 3D printer in 3D Printing Industry Awards.

ARE YOU INTERESTED IN MORE DETAILS? CONTACT US!

[PRUSA3D.COM](https://prusa3d.com) | CONTACT US: MEDICAL@PRUSA3D.COM

